
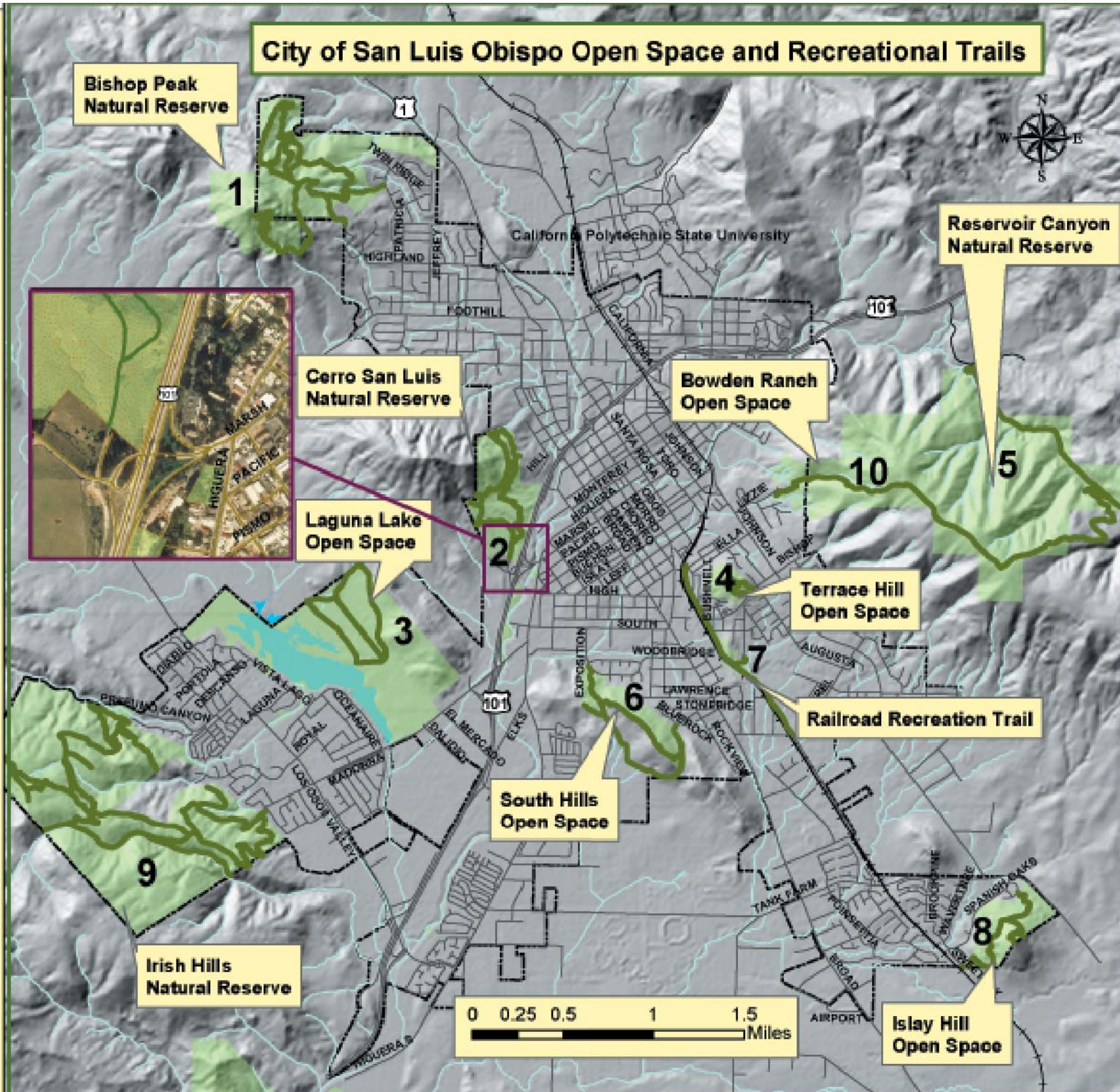


Trailhead Locations

1. Foothill to Patricia on left just past Patricia Court
2. See Insert 
3. Madonna Road to Dalidio, turn into park and stay to right until you reach parking area
4. Johnson Ave. to Bishop (on right side)
5. Take HWY 101 to Reservoir Canyon Rd. at end of road on right side
6. Take Broad St. to Woodbridge or South St. to Exposition
7. Orcutt Rd. and Railroad Tracks or end of Bushnell
8. Tank Farm/Orcutt Rd to Spanish Oaks to end of Sweetbay
9. Prefumo Canyon Rd. one mile on the left or at the intersection of Madonna & DeVaul Ranch Rd.
10. Johnson Ave. to Lizzie St., bear left at "Y", trailhead on right side at end of cul-de-sac.

City of San Luis Obispo Open Space and Recreational Trails



Trail Etiquette

In order to properly enjoy and preserve our Open Space, please observe the following:

1. Stay on designated trails NO SHORTCUTTING
2. Keep dogs on a leash
3. Please pick up after your dog
4. Do not trespass on private lands
5. Do not harass wildlife or livestock
6. The only public access to Cerro San Luis is off of Fernandez Rd. (See insert for #2)

Legend

- City limits
- Trails
- Open Space