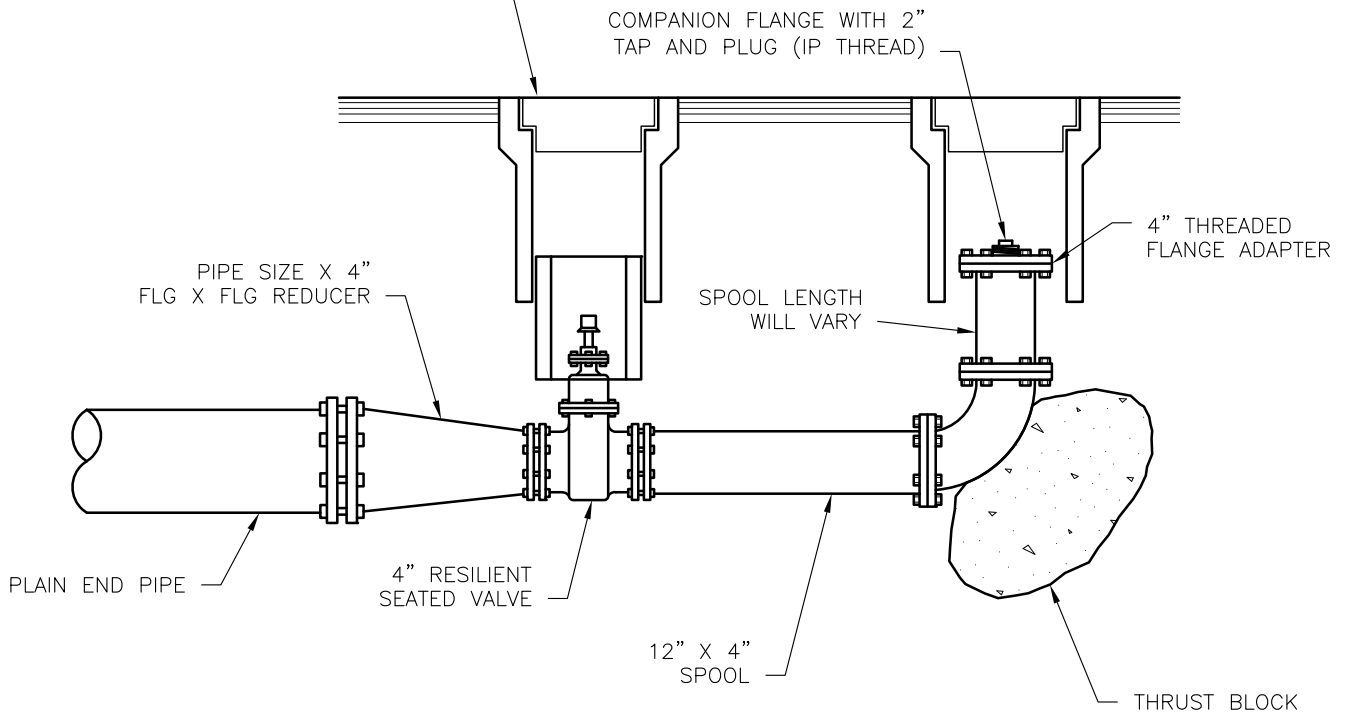


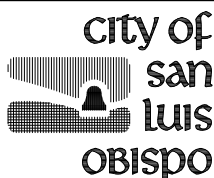
SEE ENGINEERING STD. 6340
FOR WATER WELL INFORMATION.
(TYP.)



NOTE

Protect all fittings with plastic and pour thrust block at end of street main, shape and location to be determined in field.

| REVISIONS | BY | APP | DATE |
|-------------------------------|--------------|------------|--------------|
| <i>New border</i> | <i>JDL</i> | <i>WAP</i> | <i>9-97</i> |
| <i>Revised Reducer Detail</i> | <i>MH</i> | <i>BL</i> | <i>10-05</i> |
| STANDARD CURRENT AS OF: | January 2010 | | |



BLOWOFF ASSEMBLY

6350